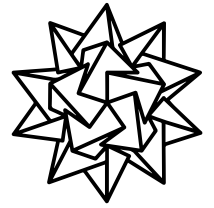


SAM WAGNER'S



SAMWAGNER.ART

ARTIST STATEMENT

My work is about the internal battles we carry and how they shape the way we move through the world. Heavy Headz is central to that.

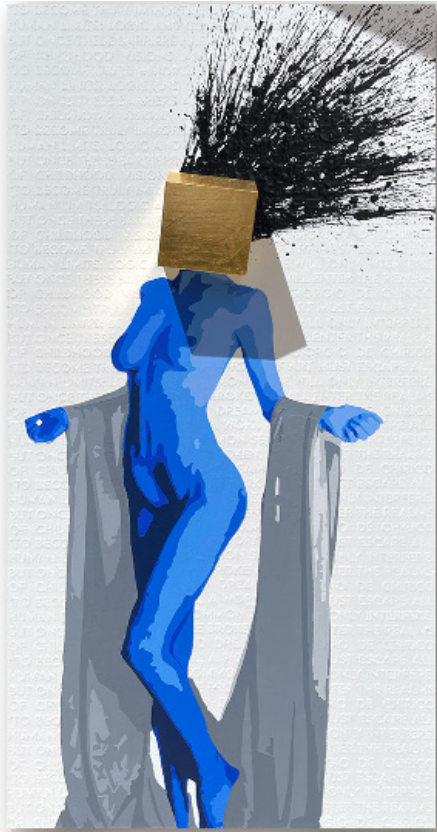
I don't make art because it's easy. I make it because it's the only thing that has ever made sense to me. I grew up in systems that didn't fit how my mind works. Labeled with learning disabilities, what I actually had was a different way of seeing. Art became how I process the world. It still is.

The figures in my work are reduced to their essentials. Block-like heads, minimal bodies, sparse environments. Stripping away detail shifts the focus to what remains: posture, tension, presence, direction. Each figure feels like it's holding something, working through something, or fighting to stay balanced.

The work lives in the space between problem solving and self-worth, between pressure and perseverance. Not always the breaking point, but often the moment just before it. Where things are still standing, but you can feel exactly what it takes to keep them there.

I MAKE ART BECAUSE WORDS ARE HARD

@SAMWAGNERDESIGN



TITLE: HEAVI HEADZ N.012

MEDIUMS: ACRYLICS, GOLD LEAF, MAGNETS & PLA

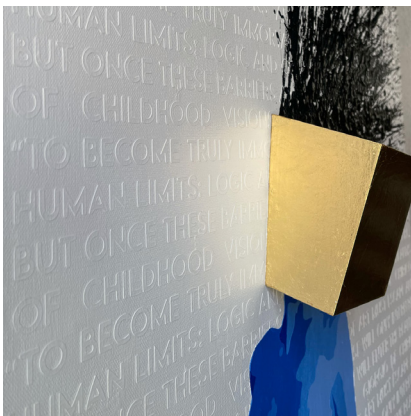
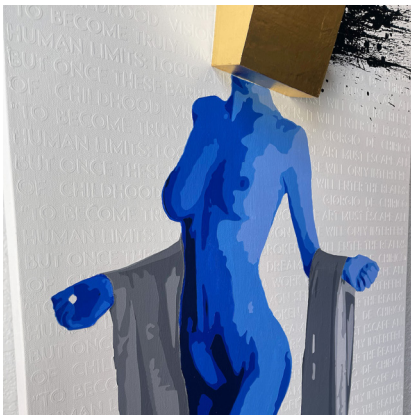
DIMENSIONS: 24" X 48" X 6"

DATE: LATE 2024 - AVAILBLE

LEARN MORE ABOUT THE ART:

This artwork is a labor of love and a testament to persistence. Creating this white on white background with embossed lettering took over a month, showcasing the artist's dedication and meticulous effort. The figure you see here, like many of us, puts on a confident look and tries to stay strong, positive, and keep moving forward. But inside, there's fear, stress, and uncertainty about what this messed-up world will bring. Although the figure lacks eyes, she looks at you, unsure if you are a

friend or foe. This ambiguity invites you to reflect on your own perceptions and the emotional masks we all wear. To learn more about the origins of the Heavi Head series and view the other works in this ongoing series, visit samwagner.art/heaviheadz





TITLE: DENVER CO 8.24.24 39.732,-104.965

MEDIUMS: ACRYLICS & INK

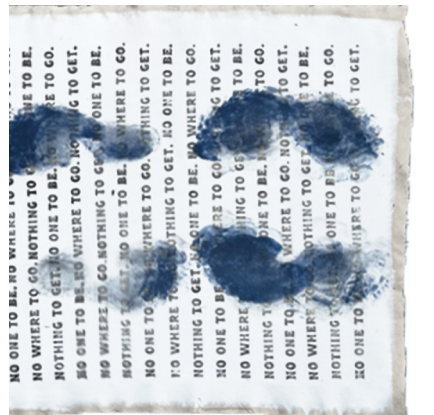
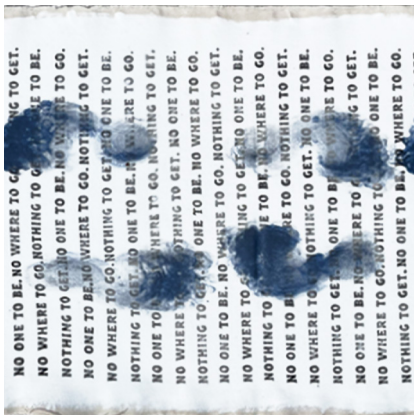
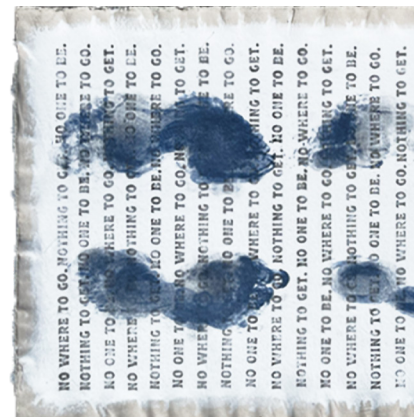
DIMENSIONS: 26" X 156"

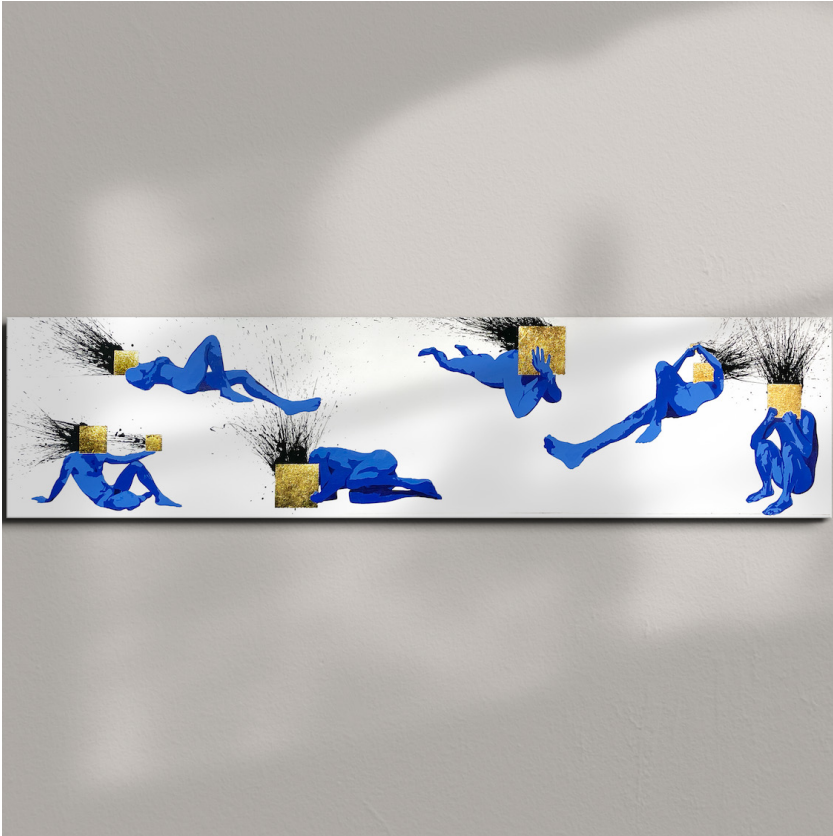
DATE: 2024 - NOT AVAILABLE

LEARN MORE ABOUT THE ART:

This project was born during a distracted walking meditation at a silent retreat in California. The idea was simple yet profound: create art while practicing silent walking meditation. After a brief reflection, I tucked it away and continued my walk. I carve a familiar mantra into stamps and imprint it onto a canvas. After placing the canvas on a street with paint at both ends, I walk back and forth, repeating the mantra as I move. The beauty of this project lies in its purity. Each artwork is offered as Dana (a donation -

of any amount) keeping it free from commercialism and rooted in mindfulness. Every piece is titled with its location, date, and time, with all proceeds reinvested into creating more art and joy.





TITLE: TELL ME WHEN?

MEDIUMS: ACRYLICS & GOLD LEAF

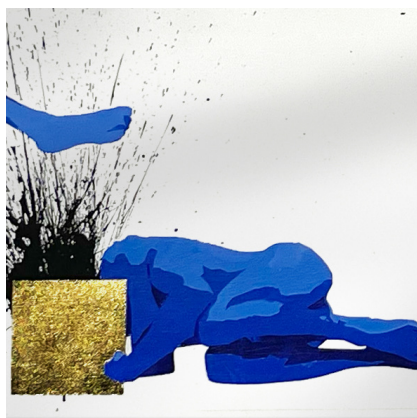
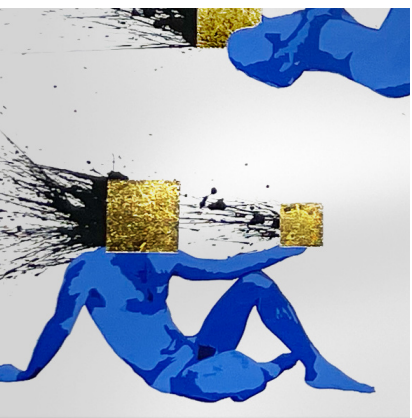
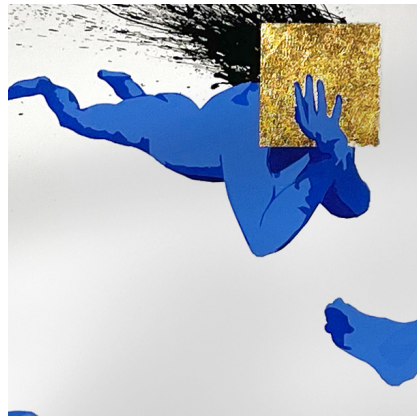
DIMENSIONS: 60" X 14" X 2"

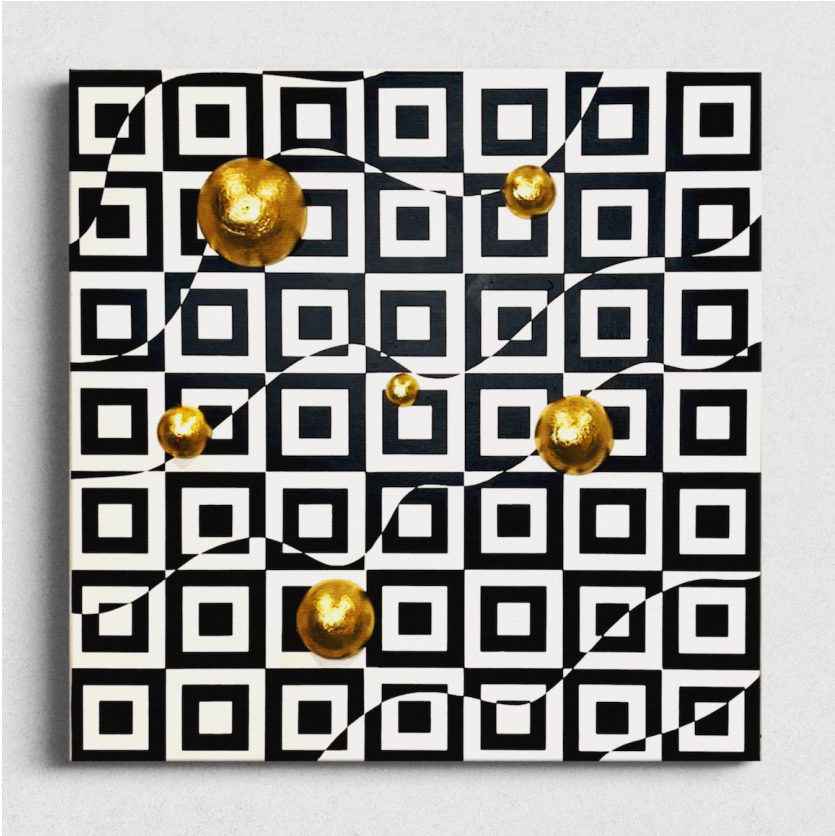
DATE: 2022 - NOT AVAILABLE

LEARN MORE ABOUT THE ART:

Created during my first bout with Covid-19, this work reflects ten days of isolation inside my seven-by-fifteen-foot studio apartment during a two-month residency. I was grateful my symptoms were not life-threatening and that I hadn't put loved ones at risk, yet knowing I would lose a quarter of my residency to confinement was crushing. Each morning began with an at-home test and thirty minutes of anxious waiting, hoping for a negative result that never came. The blue palette mirrors the weight of those repeated disappointments, while the gold cube

heads and cell phones connect it to other works in my Reemergence, New Norms, and the Future series. Black splatters evoke the chaotic nature of the virus and the creeping cabin fever of being trapped in such a small space. The confined aspect ratio and figures pressed against the edges of the white space mirror the claustrophobia I felt—trapped in a space too small to exist comfortably.





TITLE: TURBULENT CREATOR

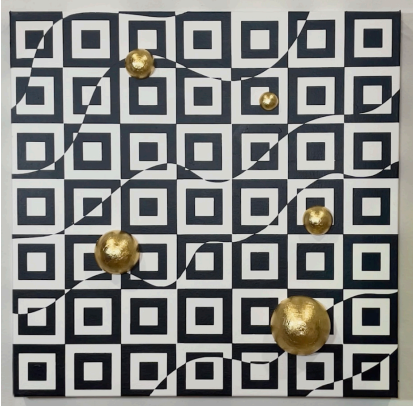
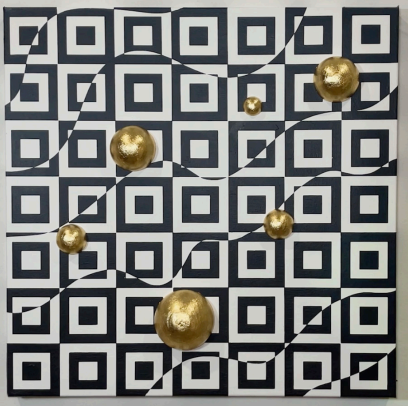
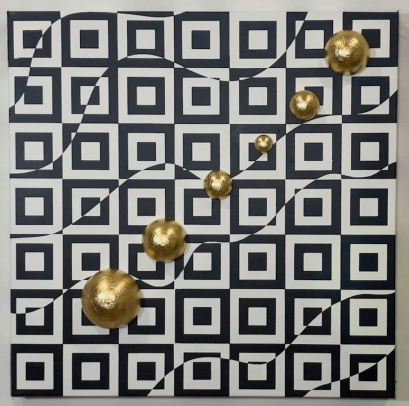
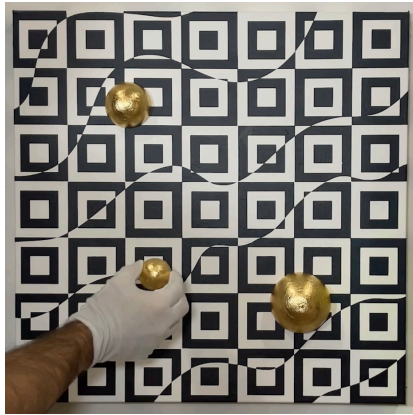
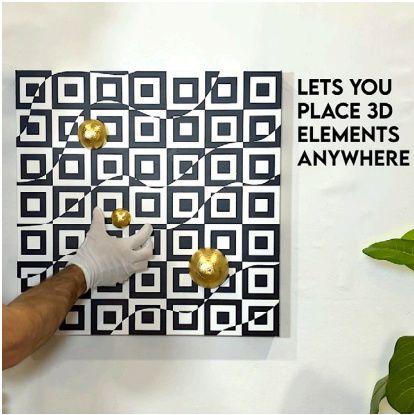
MEDIUMS: ACRYLICS, GOLD LEAF, MAGNETS & PLA

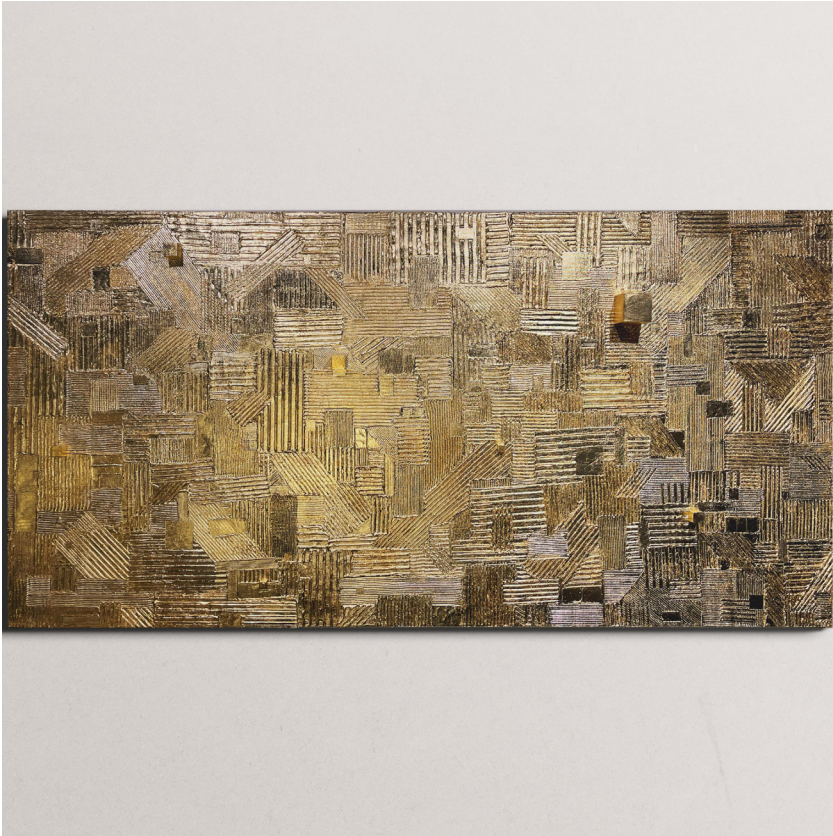
DIMENSIONS: 20" X 20" X 3.75"
DATE: 2023 - AVAILBLE

LEARN MORE ABOUT THE ART:

In the heart of chaos, where order meets disarray, "Turbulent Creator" emerges as a testament to the ever-changing landscape of our lives. Each moveable golden sphere, a symbol of the unique and impactful moments we collect, invites its beholder to create their own story of balance amidst the waves of uncertainty, making it a mesmerizing focal point of any room that sparks endless conversations.

[See video observe the magetic orbs](#)





TITLE: SURFACE

MEDIUMS: ACRYLICS, GOLD LEAF,
MAGNETS & PLA

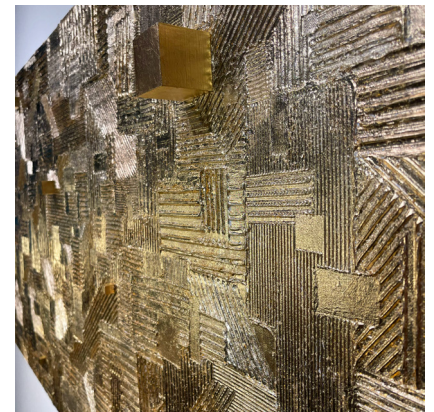
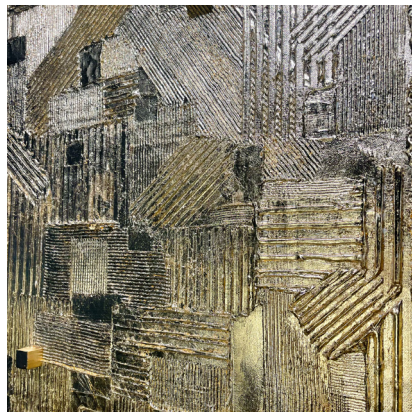
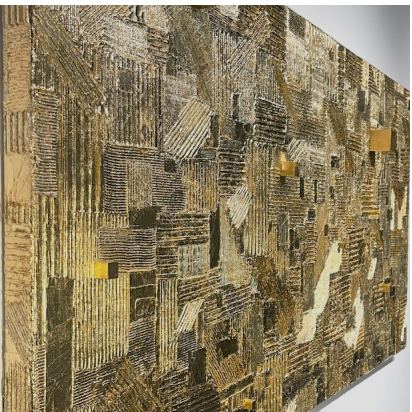
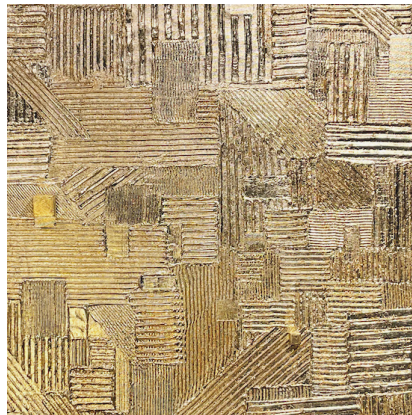
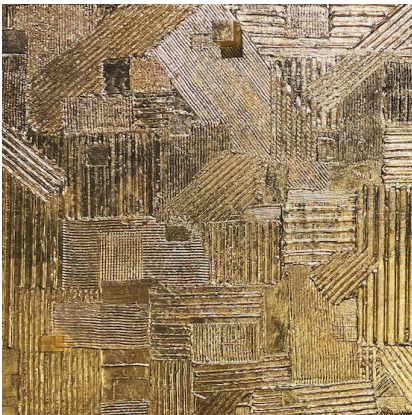
DIMENSIONS: 60" X 30" X 5.5"

DATE: 2022 - NOT AVAILABLE

LEARN MORE ABOUT THE ART:

have magnets attached to the back of the can around to a few locations across the work. this work is the center piece for my show titled Reemergence, New Norms, & The Future. . Focusing on the fact that just the surface level cannot tell you everything about what someone is going through or feeling. Even if it looks bright at first glance, there are ups and downs and shadows cast. Strategically placed 3D-printed squares lock into the surface with embedded magnets, inviting subtle reconfiguration. This work serves as the

centerpiece for my exhibition Reemergence, New Norms, & The Future, reflecting the truth that a surface rarely tells the whole story. Beneath the gleam lie shadows, depth, and the unseen struggles that shape us.





TITLE: A RECAP -

MEDIUMS: ACRYLICS & COTTEN EMBROIDERY TREAD

DIMENSIONS: 39.4" X 39.4" X 2"
DATE: 2022 - NOT AVAILBLE

LEARN MORE ABOUT THE ART:

This work began taking shape in early 2021, though I didn't realize it at the time. That year was one many wish to forget, yet it will be etched into history books for centuries. Recap touches on the shared emotions felt by millions worldwide, drawing from both personal and collective memory. The palette and forms borrow from artists I studied intensely during that period, while the textures and materials grew out of experiments I used simply to stay grounded. Like friends who turned to embroidery to escape the constant pull of screens and headlines, I found comfort in a process that kept my

hands moving and my mind focused. I didn't realize then the resonance this piece would hold years later, as we continue to live through unprecedented times that somehow manage to become more unbelievable and frustrating, preserving the ups and downs of a year that challenged and reshaped us.





TITLE: POTENTIAL IN PROGRESS

MEDIUMS: ACRYLICS, RESIN & PAINT BRUSHES

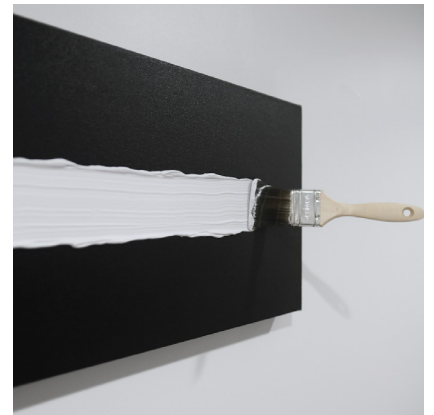
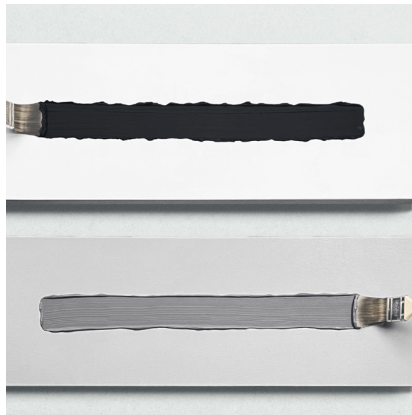
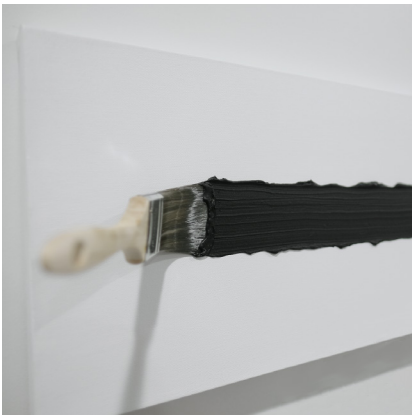
DIMENSIONS: 36" X 57" X 9"

DATE: 2022 - AVAILBLE

LEARN MORE ABOUT THE ART:

Potential in Progress is about the journey of creation—the problem-solving, the exploration, and the persistence it takes to keep moving forward. Created in 2020-2021, this series captures the tension between where we are and where we hope to be, reminding us that progress is rarely linear. Each piece exists in a state of becoming, not as a final statement but as a reflection of the creative process itself. The work challenges the idea of fixed outcomes, emphasizing that the real value lies

in the act of making. The finished artwork is simply a byproduct of the struggle, discovery, and momentum that drive creation forward. By embracing imperfection and change, these works celebrate the process over the product, reinforcing that growth comes from the act of doing, not just the result.





TITLE: DISCOVERY N.001

MEDIUMS: ACRYLICS, SPRAY PAINT,
& GOLD LEAF

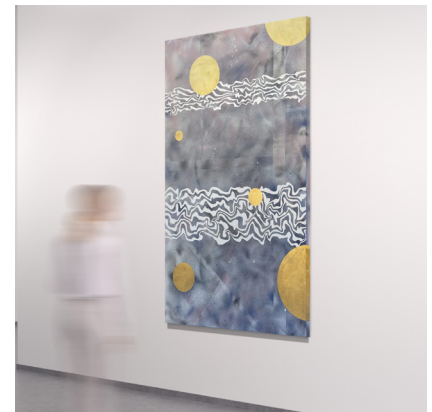
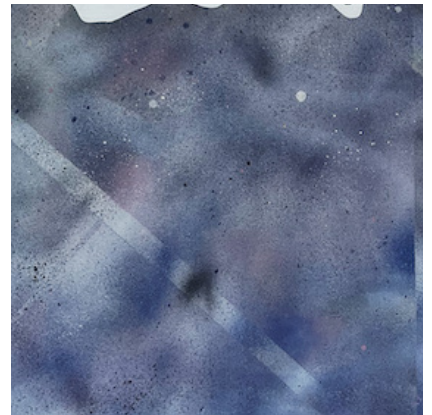
DIMENSIONS: 36" X 72" X 2"

DATE: 2023 - AVAILABLE

LEARN MORE ABOUT THE ART:

Discovery N.001 is the first in a series exploring spontaneity, intuition, and the thrill of creation without a preplanned process. Unlike my usual structured approach, this work was built layer by layer, guided by instinct rather than rigid design. The goal was simple: to discover a visually dynamic and engaging composition without overthinking. Each addition—spray paint, acrylic, and shifting forms—was an attempt to find balance within asymmetry, letting the work evolve

naturally. This piece is about trusting the process, embracing unpredictability, and allowing discovery to lead the way. In doing so, it challenges my own tendencies toward control, pushing me to create in a more fluid and responsive way.





TITLE: WAM GALLERY

MEDIUMS: MIXED MEDIA

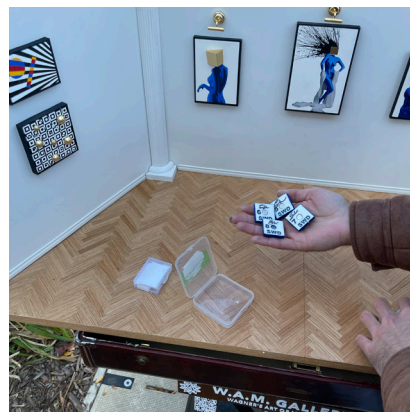
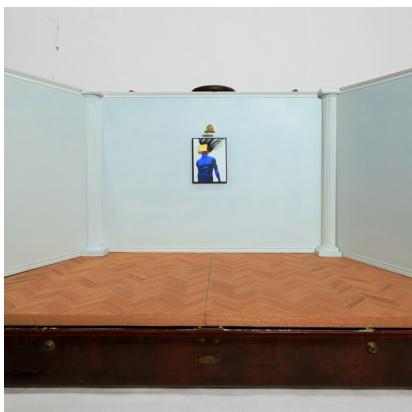
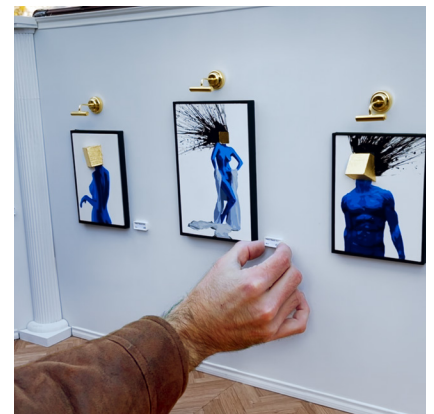
DIMENSIONS: SUITCASE ART GALLERY

DATE: 2024

LEARN MORE ABOUT THE ART:

Wagner's Art of Miniatures is a traveling gallery housed inside a hand-built suitcase. Crafted with custom 3D-printed parts and magnets, it functions as both an exhibition space and an artwork itself. The gallery was created to bring art into people's lives in a way that feels joyful, personal, and accessible. Each show features miniature original pieces designed to be affordable for collectors who want to support emerging artists but may not have the space or budget for larger works.

At its core, WAM Gallery is about connection. About making the experience of collecting art less intimidating and more human. About offering something tangible and lasting in a world that often feels out of reach. Small in scale. Serious in intention.





TITLE: JUST DOING OUR BEST
0601025

MEDIUMS: ACRYLICS & GOLD LEAF

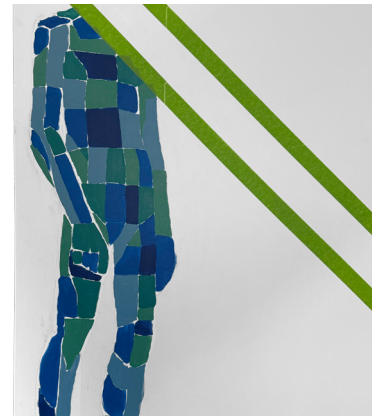
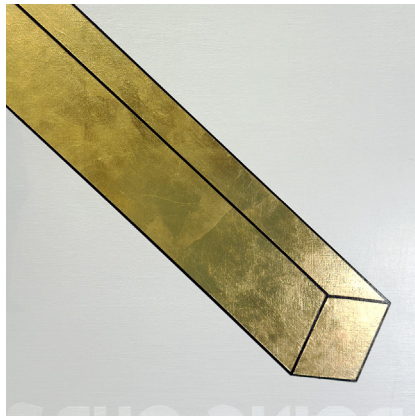
DIMENSIONS: 48" X 36" X 1.75"

DATE: JUNE 2025 - AVAILBLE

LEARN MORE ABOUT THE ART:

This work is about the quiet pressure we carry and the expectations we never asked for. It is a reminder that giving what you can, when you can, is enough. Not every day demands everything—some days ask for presence, some for patience. If you are still here, still trying, still showing up, you are doing your best. The phrase is not resignation but quiet affirmation, valuing effort even when unseen. The composition balances structure and openness, with clean lines meeting quiet space and gold leaf catching light across a matte sur

face. It reflects the mental and emotional weight many of us carry, holding the push and pull between expectation and reality, effort and ease, control and surrender. Made slowly and with care, it holds layers that reveal themselves over time.





TITLE: "UNTITLED"

MEDIUMS: ACRYLICS & PLA

DIMENSIONS: 24 X 36 X 3.5"

DATE: 2025 - AVAILBLE

LEARN MORE ABOUT THE ART:

An exploration of texture and relief, where depth emerges through subtle shifts in surface. This work uses layers of white on white, drawing the viewer in to discover intricate details up close while still offering balance, texture, and shadow from a distance. A magnetic, swappable cube invites interaction, available in green, blue, red, and yellow, allowing the owner to change the piece's mood with a small, playful gesture.

